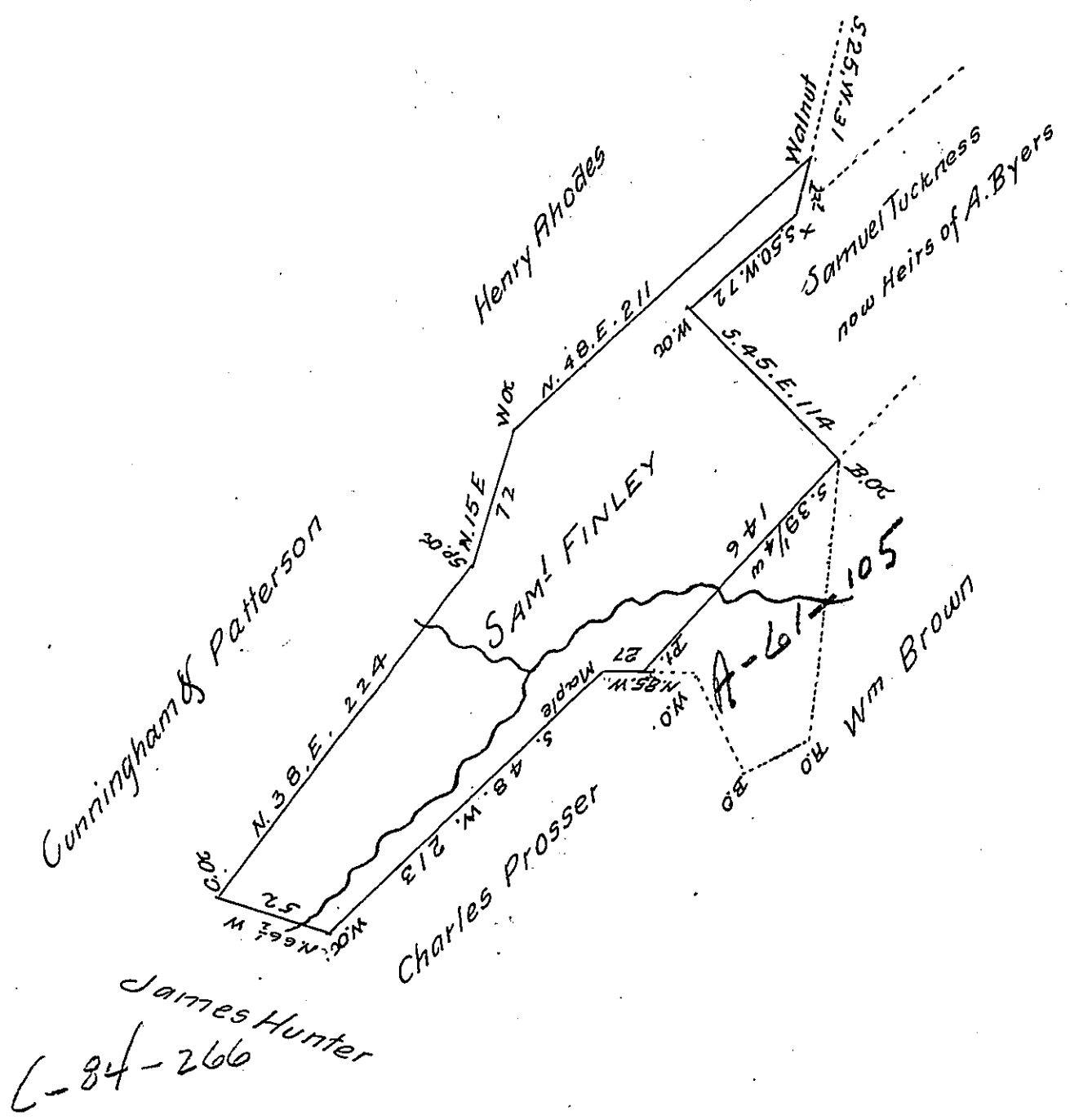


FORM No. 1.



James Hunter
C-84-266

Situate in Sherley Township Huntingdon County containing Two hundred
 eighteen acres & the usual allowance. The same being a part of a tract
 of Land Originally surveyed in pursuance of a Warrant granted to Sam-
 uel Finley dated the 1st of August 1766. the Original survey was then said
 to contain 258 1/4 Acres. This part resurveyed & divided from the
 residue of said Tract the 6th of Novr 1833

Wm. Reed D.S.

To Jacob Spangler Esqr
Surveyor General.

IN TESTIMONY that the above is a copy of the original remaining on file in
 the Department of Internal Affairs of Pennsylvania, made
 conformably to an Act of Assembly approved the 16th day of
 February 1833, I have hereunto set my hand and caused
 the Seal of said Department to be affixed at Harrisburg,
 this tenth day of August 1907

Henry Howell
 Secretary of Internal Affairs.